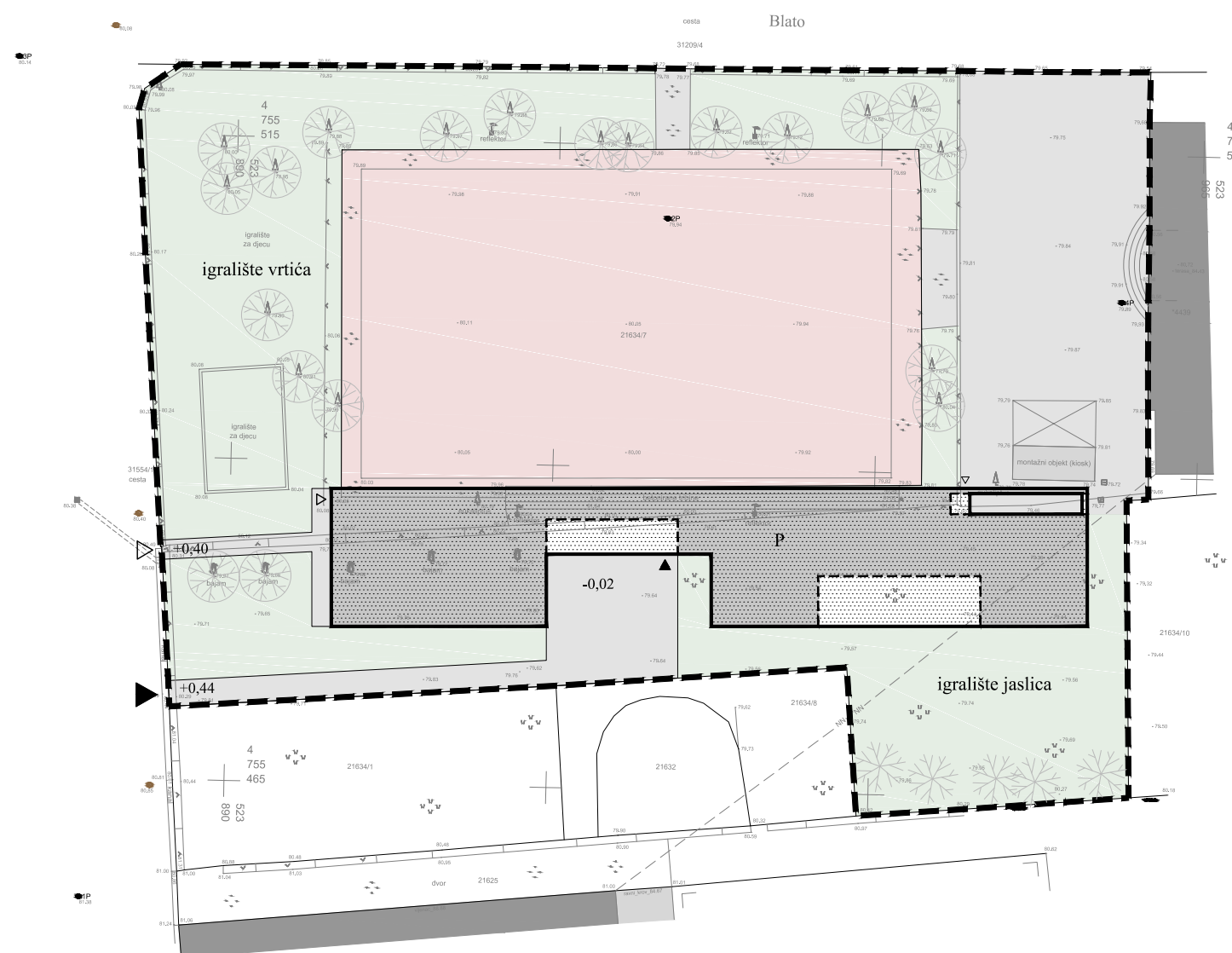

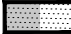






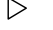


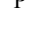



GRGUREVIĆ & PARTNERI d.o.o.  
191\_Dječji vrtić i jaslice u Blatu  
Idejno rješenje



-  granica čestice
-  ukupni gabarit zgrade
-  gabarit zatvorenog dijela zgrade
-  postojeće sportsko igralište
-  popločenje
-  uređeni teren sa zelenilom i prostorom za igru djece

-  pješački pristup
-  glavni ulaz u zgradu
-  gospodarski pristup
-  gospodarski ulaz u zgradu
-  pomoćni ulaz / izlaz na igralište
-  katnost (prizemlje)

 postojeće sačuvano drvo

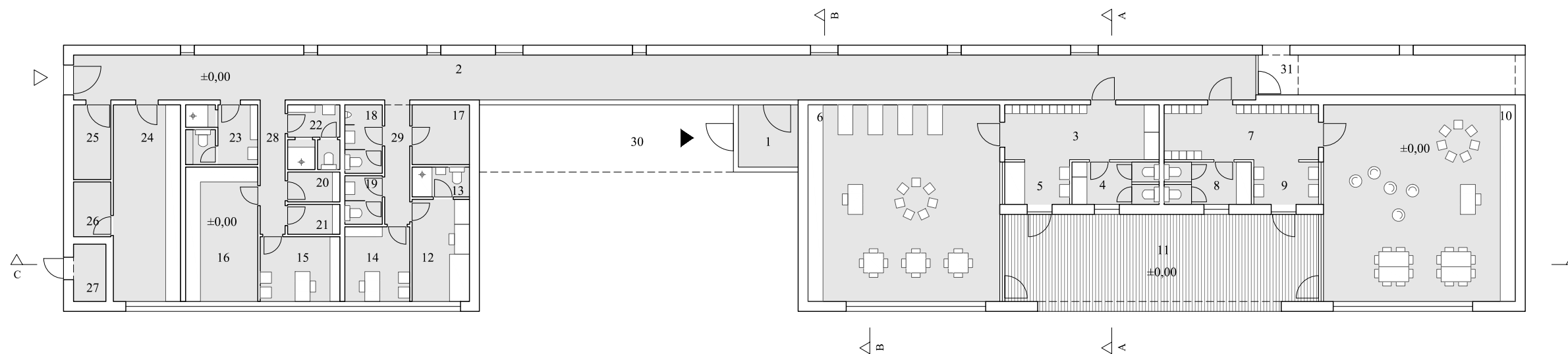
 novo drvo

broj skupnih soba jaslica: 1  
 broj skupnih soba vrtića: 1  
 ukupan broj skupnih soba: 2  
 ukupan broj djece: 32

površina čestice: 3888,38 m<sup>2</sup>  
 površina zemljišta pod zgradom: 514,92 m<sup>2</sup>  
 kig | 514,92 / 3888,38 = 0,132

ostvareni GBP: 458,49 m<sup>2</sup>  
 kis | 458,49 / 3888,38 = 0,118

±0,00 = 80,00 mnv



|    |                                  |                      |
|----|----------------------------------|----------------------|
| 1  | <i>Ulazni prostori</i>           |                      |
|    | vjetrobran                       | 6,24 m <sup>2</sup>  |
| 2  | ulazni hodnik                    | 85,46 m <sup>2</sup> |
|    | <i>Prostori za boravak djece</i> |                      |
| 3  | trijaža                          | 13,64 m <sup>2</sup> |
| 4  | prostor sanitarnih uređaja       | 5,95 m <sup>2</sup>  |
| 5  | prostor za njegu                 | 4,42 m <sup>2</sup>  |
| 6  | skupna soba jaslica              | 60,83 m <sup>2</sup> |
| 7  | garderoba                        | 13,64 m <sup>2</sup> |
| 8  | prostor sanitarnih uređaja       | 5,95 m <sup>2</sup>  |
| 9  | prostor za umivaonike            | 4,42 m <sup>2</sup>  |
| 10 | skupna soba vrtića               | 60,83 m <sup>2</sup> |
| 11 | natkrivena terasa                | 48,01 m <sup>2</sup> |

|    |  |                     |
|----|--|---------------------|
|    | <i>Prostori za odgojno-obrazovne radnike</i> |                     |
| 12 | soba za med. sestru s prostorom za izolaciju | 9,43 m <sup>2</sup> |
| 13 | sanitarni čvor sobe za izolaciju             | 2,76 m <sup>2</sup> |
| 14 | soba ravnatelja                              | 7,80 m <sup>2</sup> |
| 15 | soba odgajatelja                             | 8,32 m <sup>2</sup> |
| 17 | spremište didak. sredstava i rekvizita       | 5,52 m <sup>2</sup> |
| 18 | wc (m)                                       | 4,12 m <sup>2</sup> |
| 19 | wc (ž)                                       | 2,92 m <sup>2</sup> |
| 20 | garderoba zaposlenika (m)                    | 2,52 m <sup>2</sup> |
| 21 | garderoba zaposlenika (ž)                    | 2,52 m <sup>2</sup> |

|    |   |                      |
|----|---|----------------------|
|    | <i>Gospodarski prostori</i>             |                      |
| 16 | praonica                                | 15,66 m <sup>2</sup> |
| 22 | garderoba i sanitarni čvor (kuhar)      | 5,13 m <sup>2</sup>  |
| 23 | garderoba i sanitarni čvor (spremačice) | 6,60 m <sup>2</sup>  |
| 24 | kuhinja                                 | 21,33 m <sup>2</sup> |
| 25 | prostorija za tehniku                   | 4,50 m <sup>2</sup>  |
| 26 | spremište kuhinje                       | 3,30 m <sup>2</sup>  |
| 27 | smeće                                   | 3,00 m <sup>2</sup>  |
| 28 | hodnik                                  | 5,40 m <sup>2</sup>  |
| 29 | hodnik                                  | 5,00 m <sup>2</sup>  |
|    | <i>Vanjski prostori</i>                 |                      |
| 30 | ulazni trijem                           | 28,56 m <sup>2</sup> |
| 31 | trijem pomoćnog ulaza                   | 2,56 m <sup>2</sup>  |

0 2 10 m

IS

